



Stainless load cell, model RBMST



The stainless load cell, model RBMST, matches the food industry, the chemical industry, and other demanding environments where there is a need for high capacity load cells.

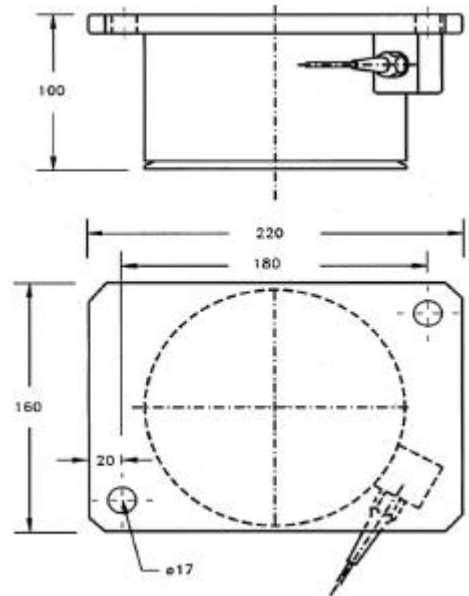
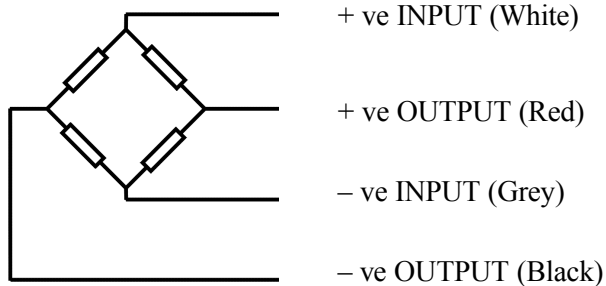
The electronics is protected against damage from fault currents due to lightning strokes etc. The isolated installation is also a good securing against electric noise in the weighing system and from connected data collecting equipment. The load cell has a tightness of IP68, protecting the insides against water and dust.

The RBMST series is produced in stainless steel, AISI 304, and includes the capacities 20, 30, and 50 tons. All TEKFA's load cells are standard calibrated. This means that a load cell can be replaced with another with the same capacity without re-calibrating the whole weighing system. The load cell may be connected to 350 Ω weighing amplifiers as well as all TEKFA's instruments.

RBMST-01.02-uk

Data:

Total error in % of nominal load	$\pm 0.1 \%$
Output at rated load (mV/V)	$1.8 \pm 0.1\%$
Recommended supply (VDC/VAC)	10V
Maximum supply (VDC/VAC)	15 V
Output impedance (Ω)	350
Input impedance (Ω)	350 - 420
Operation temperature range (C°)	-30 - +70
Safe overload	20 %
Destructive overload	50 %
Cable length (standard)	10 m
Tightness	IP 68; 20 bar
Construction	AISI 304
Surface	Polished
Own weight	Ca. 8.5 kg

Dimensions

Cable colour codes


Item no.	Capacity in ton	Item no.	Capacity in ton	Item no.	Capacity in ton
RBMST20	20	RBMST30	30	RBMST50	50