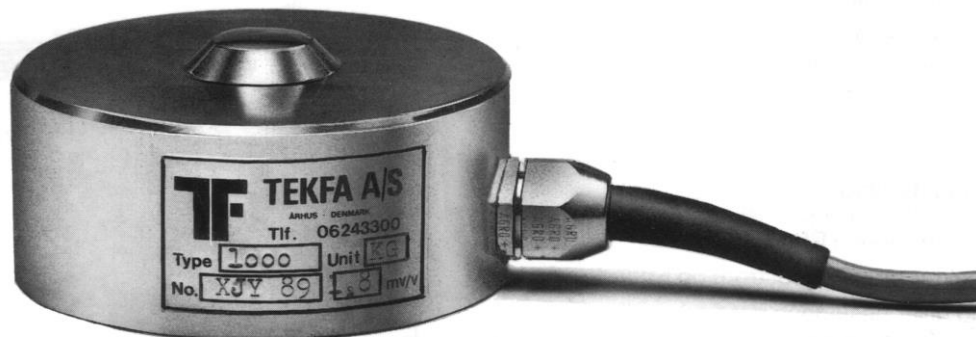


## Stainless load cell, model RB



TEKFA's load cell, model RB, is a compact and simple unit for a various weighing purposes. The RB load cells are typically used at silos, tanks, platform scales, and various dosing plants. Thus, RB suits a lot of different industries.

The load cell housing is manufactured in zinc-coated steel, and with a tightness of IP68, the electronics is protected against influence from water and dust.

The RB series is produced with capacities from 150 kg to 12.500 kg. TEKFA's load cells

are standard calibrated, i.e., they have the same zero and the same output of 1.8 mV/V. This means that one load cell may be replaced with another with the same capacity without recalibrating the whole weighing system.

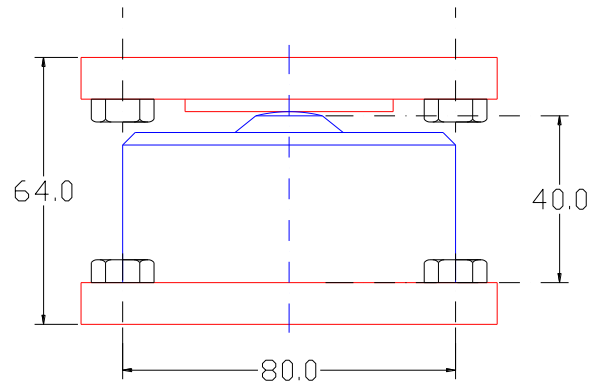
The load cells may be connected to all 350Ω weighing amplifiers as well as TEKFA's instruments. TEKFA's weight indicators range from simple weighing indicators to PLC and weighing computers with programs designed for the single customer.

RB-03.02-dk

## Data

Total error in % of maximum load	$\pm 0.1 \%$
Rated output (mV/V)	$1.8 \pm 0.1\%$
Supply recomm. (VDC or VAC)	10V
Supply max. (VDC or VAC)	15 V
Impedance output ( $\Omega$ )	350
Impedance input ( $\Omega$ )	350 - 400
Operation temperature range (C °)	-30 - +70
Overload without effect	20 %
Destructive overload	50 %
Cable length (standard)	5 m
Tightness	IP 68; 20 bar
Material	Steel
Own weight	Ca. 1.1 kg

## Dimensions



The height of 64 mm is inclusive the insulation mount above and under the load cell.

## Options

Extra cable

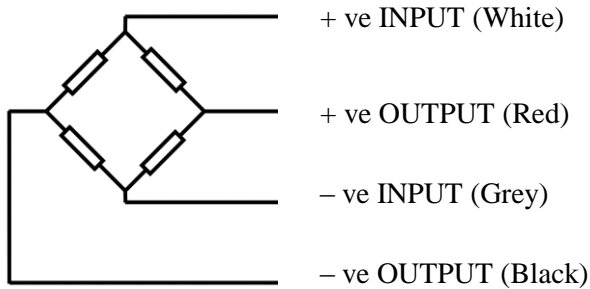
Mount

Isolation mount

See data sheet on silo mount.

We recommend the mounting of a isolation mount type RBOU to protect against faulty currents.

## Cable colour



Item no.	Capacity in kg	Item no.	Capacity in kg
RB00150	150	RB00500	500
RB00175	175	RB01500	1,500
RB00200	200	RB02000	2,000
RB00250	250	RB02200	2.200
RB00350	350	RB12500	12,500