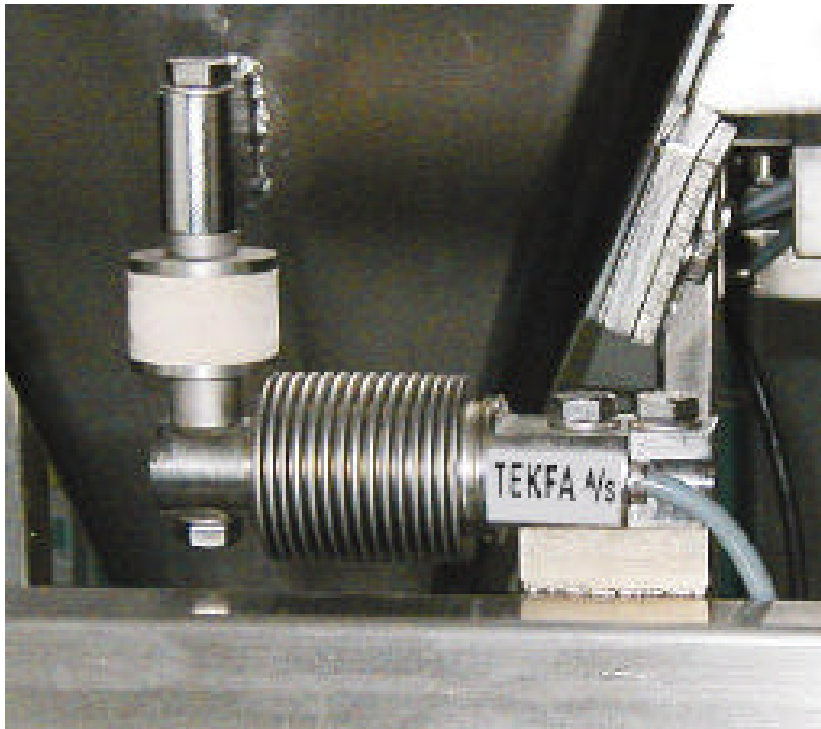


MTG Mount

Vibration damping mount for TBS1, TBS2, 355 and 3510 load cells



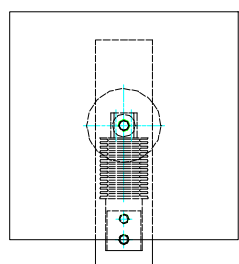
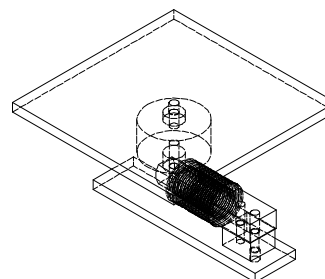
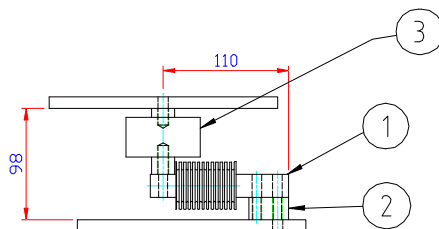
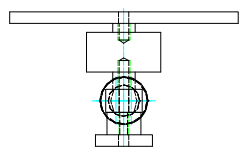
The mounts of the type MTG are manufactured for use in TEDEA HUNTLEIGH 355, 3510, and HSB load cells, but suits most bending load cells from 5 kg to 2000 kg. The mounts are produced by stainless steel and white, FDA-approved nitrile rubber.


The mount is placed upon the load cell so it works with compression. The MTG mount has many advantages. It protects against shock overload, and it allows the vessel to move horizontally so the load cell is not influenced by vibrations.

During construction of new plants this deflection must be taken into account. For example, you must make horizontal pipes so flexible that they can withstand deflections without creating vertical forces that may affect the weighing. See the deflection table on the back of this datasheet.

06.06-UK

Pos.	Stk.	DESCRIPTION	Standard	Længde	Material
1	1	LOAD CELL	355		
2	1	MOUNT			
3	1	VIBRATION DAMPER			
4	1				
5	1				



Hoved målførhøld: 1:4	Matr. AISI 304	\$ Ændringer	Denne tegning tilhører TEKFA A/S, og må ikke helt eller delvis videresendes, kopieres eller sendes til tredjepart.
Generelle tolerancer: ±1	Beh.	* Kontrolmål	
Titel: MT-G mount			
 TEKFA A/S <small>ÅRHUSVEJ 201, KLANK 8464 GALTEN Tlf. 86946700</small>	Tegn. EL	Format: A4	Erstat. for. .
	Konst. EL		Erstat. af
	Godk.	Tegn. nr.	D0218025
	Dato: 25.11.02		

DATA

Item no.	Load cell model	A	B	C	D	d	E	F	H	Hardness (Shore)
MTG-50	355 & DC6 5 - 50 kg	5	25	12	ø32	ø16	M8	-	42	55
MTG-250	355 & DC6 100 - 250 kg	8	35	15	ø65	ø20	M8	-	58	55
MTG-500	3510* 500 kg	8	45	8	ø100	ø25	M12	-	45	80
MTG-2000	3510* 1000/2000 kg	8	45	8	ø100	ø25	M12	-	45	80

With the MTG it is possible to make overload protections. The thread is adjusted to make a clearance that correspond to the deflection at full load. The clearance is adjusted according the deflection of the rubber that is shown in the table below.

Don not forget that the load on the mount may be bigger than the capacity of the load cell.

MTG - 50 :	2,4 mm at 50 kg
MTG - 250 :	3,2 mm at 250 kg
MTG - 500 :	3,8 mm at 500 kg
MTG - 2.000 :	4,5 mm at 2,000 kg