

TEKFA compression load cell

Model RBS



TEKFA's stainless load cell, model RBS, is a compact and simple unit for a various weighing purpose. The RBS load cells are typically used at silos, tanks, platform scales, and various dosing plants. Thus, RBS suits a lot of different industries.

The load cell housing is manufactured in stainless steel, and with a tightness of IP68, the electronics is protected against influence from water and dust.

The RBS series is produced with capacities from 150 kg to 15 ton. TEKFA's load cells are standard calibrated, i.e., they have the same zero and the same output of 1.8 mV/V. This means that one load cell may be replaced with another with the same capacity without re-calibrating the whole weighing system.

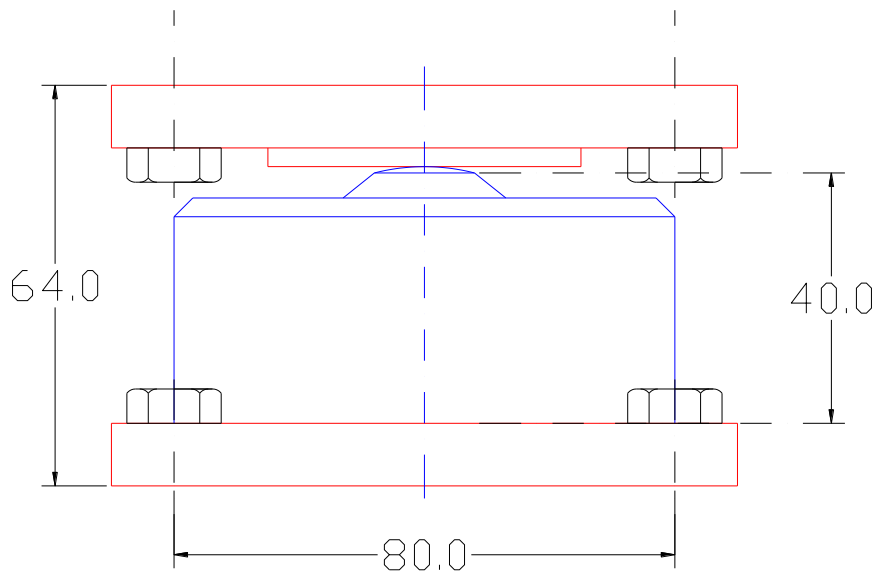
The load cells may be connected to all 350Ω weighing amplifiers as well as TEKFA's instruments. TEKFA's weight indicators range from simple weighing indicators to PLC and weighing computers with programs designed for the single customer.

Specifications	
Total error in % of maximum load	±0,1%
Rated output (nominal last mV/V)	1,8 ± 0,1%
Supply recomm. (VDC or VAC)	10V
Supply max. (VDC or VAC)	15V
Impedance output (Ω)	350
Impedance input (Ω)	350-400
Operation temperature range (C°)	-30 - +70
Overload without effect	20%
Destructive overload	50%
Cable length (standard)	5 meters
Tightness	IP68, 20 bars
Material	Stainless steel
Own weight incl. packaging	Ca. 1,4 kg

Options

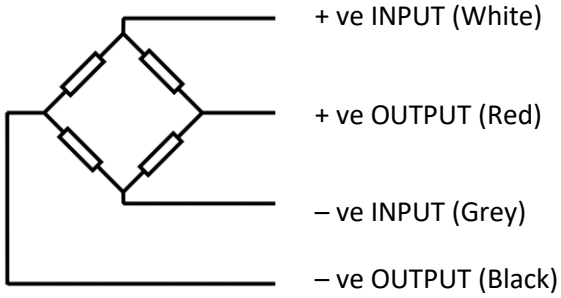
- Extra cable: Up till 100 meters.
- Mount: See data sheet on silo mount.
- Isolation mount: We recommend the mounting of RBOU isolation mount for protection against fault currents.

Dimensions



NB: The height of 64 mm is inclusive the isolation mount above and under the load cell.

Cable colour



Item no.	Capacity in Kg	Item no.	Capacity in Kg	Item no.	Capacity in Kg
RBS00150	150	RBS00650	650	RBS05000	5.000
RBS00175	175	RBS00700	700	RBS07000	7.000
RBS00200	200	RBS01000	1.000	RBS10000	10.000
RBS00250	250	RBS01500	1.500	RBS12500	15.000
RBS00350	350	RBS02000	2.000		
RBS00500	500	RBS03500	3.500		